

## TYPE 807 und 808

Pressure switch

Normally closed contact (Type 807)

Normally open contact (Type 808)

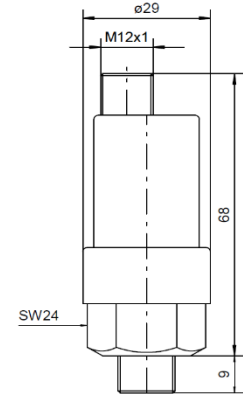
Width across flats 24  
Height 82mm  
Thread length 9mm



A Kant pressure switch Type 807 and 808 has an integrated N.C. / N.O. contact. When pressure is applied, a diaphragm is deformed or a piston is displaced via a lifting movement. The deformation or movement depends on an adjustable spring preload. When the switching point is reached, the diaphragm or piston has undergone a defined movement which actuates the switch and opens or closes the electrical circuit. Specific pressure values can be monitored via the switching signal.

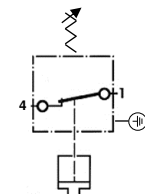
	ADJUSTMENT RANGE [mbar]	OVERPRESSURE SAFETY	ORDER NUMBER	
			NC CONTACT	NO CONTACT
DIAPHRAGM	0,2 – 1	300 bar	807-1-ABC	808-1-ABC
	1 – 10		807-10-ABC	808-10-ABC
	2 – 20		807-20-ABC	808-20-ABC
	10 – 100	600 bar	807-100-ABC	808-100-ABC
	20 – 200		807-200-ABC	808-200-ABC
PISTON	10 – 100	600 bar	807-100-ABC	808-100-ABC
	20 – 200		807-200-ABC	808-200-ABC

REPRODUCIBILITY	~ 5%	ELECTRICITY MAX.	2 Amp.
HYSTERESIS	5-10%	TYPE OF PROTECTION	IP 55
SWITCHING ELEMENT	NC Contact 807 NO Contact 808	PERMISSIBLE TEMP.	-20° to +100° C
SWITCHING FREQUENCY	200/min	WEIGHT	0,09 kg
VOLTAGE	250 Volt		

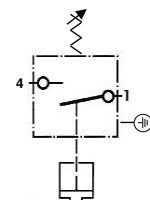


With device connector M12

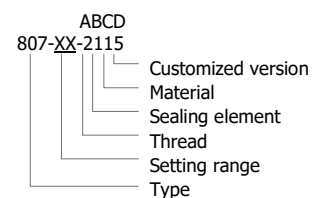
### CONNECTION 807:



### CONNECTION 808:



→ Order Number Example:



### A Thread

	A
<b>G 1/8</b>	1
<b>G 1/4</b>	2
<b>M 10X1 CYLINDRICAL</b>	3
<b>NPT 1/8</b>	4
<b>R 1/8 TAPERED</b>	5
<b>M 10X1 TAPERED</b>	6
<b>M 12</b>	7
<b>M 12X1,5</b>	8
<b>NPT 1/4</b>	9

### B Sealing element

	B	APPLICATION
DIAPHRAGM	<b>NBR</b>	1 Hydraulic oil, Machine oil, Heating oil, Nitrogen, sea water
	<b>FKM (VITON)</b>	2 Hydraulic fluids, Petrol, Alcohol, Salt and Sulphuric acid
	<b>EPDM (APTK)</b>	3 Hydrogen, Brake fluid, Acetylene, etc.
	<b>SILICONE</b>	4 Food, Water etc.
PISTON	<b>PISTON SEALING</b>	8 Oil
	<b>PISTON SEALING</b>	9 Hot water

### C Body material

	C
<b>STEEL GAL ZN 5</b>	1
<b>VA 1.4305</b>	2
<b>BRASS 60</b>	3
<b>VA 1.4571</b>	8

### D Customized version

	D
<b>MICROSWITCH WITH GOLD PLATED CONTACTS</b>	5

The Open, Close or Change function refers to increasing pressure.