



## Technical overview

<b>Pressure range</b>				
Relative				0 ... 2.5 – 25 bar
<b>Operating conditions</b>				
Medium				Liquids and neutral gases
Temperature	Medium	+2 ... +90 °C		
	Ambient	+10 ... +60 °C		
	Storage	-30 ... +85 °C		
Overload admissible				2 x fs
Rupture pressure				3 x fs (max. 50 bar)
<b>Materials</b>				
Housing material	ABS for cover with connector RAST 2.5			ABS
	PA 6 for cover with connector DIN or cable			PA 6
Materials in contact with the medium	Sensor			Ceramic Al <sub>2</sub> O <sub>3</sub> (96%)
	Pressure connector			Grivory GV 5H
	Sealing material			FPM, EPDM, NBR
<b>Electrical overview</b>				
2 wire	Output	Power supply	Load	Current consumption
	4 ... 20 mA	10.0 ... 33 VDC	< $\frac{\text{supply voltage} - 10 \text{ V}}{0.02 \text{ A}}$ [Ohm]	< 20 mA
3 wire	0 ... 5 V	9.0 ... 33 VDC	> 10 kOhm / < 100 nF	< 5 mA
	0 ... 10 V	16.2 ... 33 VDC	> 10 kOhm / < 100 nF	< 5 mA
	ratiom. 10 ... 90%	5 VDC ±5%	> 10 kOhm / < 100 nF	< 5 mA
Polarity reversal protection	Short circuit proof and protected against polarity reversal. For connector versions mechanical protection only. The correct wiring acc. to the scheme has to be guaranteed by the OEM-customer.			
Electromagnetic compatibility	The product is designed exclusively for installation in equipment. The customer is responsible for CE conformity.			
<b>Dynamic response</b>				
Response time				< 5 ms
Load cycle				< 50 Hz
<b>Electrical connections</b>				<b>Protection standard</b>
DIN connector EN 175301-803-A				IP 65
Cable 1.5 m				IP 65
Connector RAST 2.5				IP 00
<b>Pressure connections</b>				
Outside thread			G 3/8 seal at front	Grivory GV 5H
			G 3/8 seal at back	Grivory GV 5H
			G 1/4 seal at back	Grivory GV 5H
Plug connector			(to max. 6 bar nominal pressure)	Grivory GV 5H
<b>Mounting instructions</b>				
Installation arrangement				Unrestricted
Starting torque G 3/8			min. 0.4 Nm / max. 0.8 Nm	Destruction > 30 Nm
<b>Weight</b>				
With connector RAST 2.5				~ 41 g
With connector DIN				~ 55 g
With cable				~ 95 g
<b>Packaging</b>				
Multiple packaging Cardboard boxes <sup>1)</sup>				per 240 pcs. per 600 pcs.

## Accuracy

Parameter	Unit		
Tolerance zero point	max.	% fs	± 1.5
Tolerance full scale	max.	% fs	± 1.5
Resolution		% fs	0.1
Total of linearity, hysteresis and repeatability		% fs	± 1.0
Long term stability acc. DIN EN 60770		% fs	± 0.5
TC zero point <sup>2)</sup>	max.	% fs/10K	± 0.6
TC sensitivity <sup>2)</sup>	max.	% fs/10K	- 0.15

Test conditions: 25 °C, 45% RH, power supply 24 VDC / 5 VDC  
TC0 / TCS 2 ... 85 °C

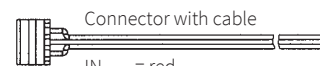
<sup>1)</sup> with blister pack inserts

<sup>2)</sup> TC = Temperature coefficient

Order code selection table			1	2	3	4	5	6	7	8	9
			503.	X	X	X	X	X	X	X	X
Pressure range <sup>1)</sup>	0 ... 2.5 bar		9	1	4						
	0 ... 4 bar		9	1	5						
	0 ... 6 bar		9	1	7						
	0 ... 10 bar		9	3	0						
	0 ... 16 bar		9	3	1						
	0 ... 25 bar		9	3	2						
	▲ Full scale signal at these pressures										
Sealing material <sup>2)</sup>	FPM	Fluoro-elastomer					0				
	EPDM	Ethylene propylene					1				
	NBR	Butadiene Acrylonitrile					2				
Adjustment	Factory						0				
Output / power supply	0 ... 5 V	9.0 ... 33 VDC							3		
	0 ... 10 V	16.2 ... 33 VDC							4		
	4 ... 20 mA	10.0 ... 33VDC							5		
	ratiom. 10 ... 90%	5 VDC ±5%							6		
Electrical connection <sup>3)</sup>	Connector	RAST 2.5							6	0	
	Cable 1.5 m	DIN EN 175301-803-A								1	
Pressure connection	Outside thread	G 3/8, seal at front	Grivory GV 5H		1						0
		G 3/8, seal at back	Grivory GV 5H								1
		G 1/4, seal at back	Grivory GV 5H		3						3
	Plug connector	(to max. 6 bar measuring range)	Noryl GV 5H		1		1				2
Pressure range variation (optional)	Indicate W and state range on order (e.g.: W0... + 9bar/OUT1...9V)										W

Accessories (supplied loose)	Order number
Safety spring for plug connector	112442
Female connector DIN EN 175301-803-A with sealing	103510
Female connector RAST 2.5 with cable 1450 mm	103167
Calibration Certificate	104551

AMP connector <sup>4)</sup>	Manufacturer's Part No.	Colour	For flexible wire
	3-829868-3	grey	7 x 0.20 mm = 0.22 mm <sup>2</sup> or 12 x 0.20 mm = 0.35 mm <sup>2</sup>
	1-966194-3	beige	7 x 0.25 mm = 0.35 mm <sup>2</sup>



Connector with cable

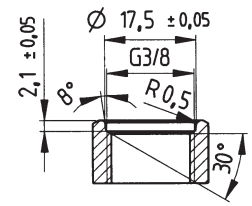
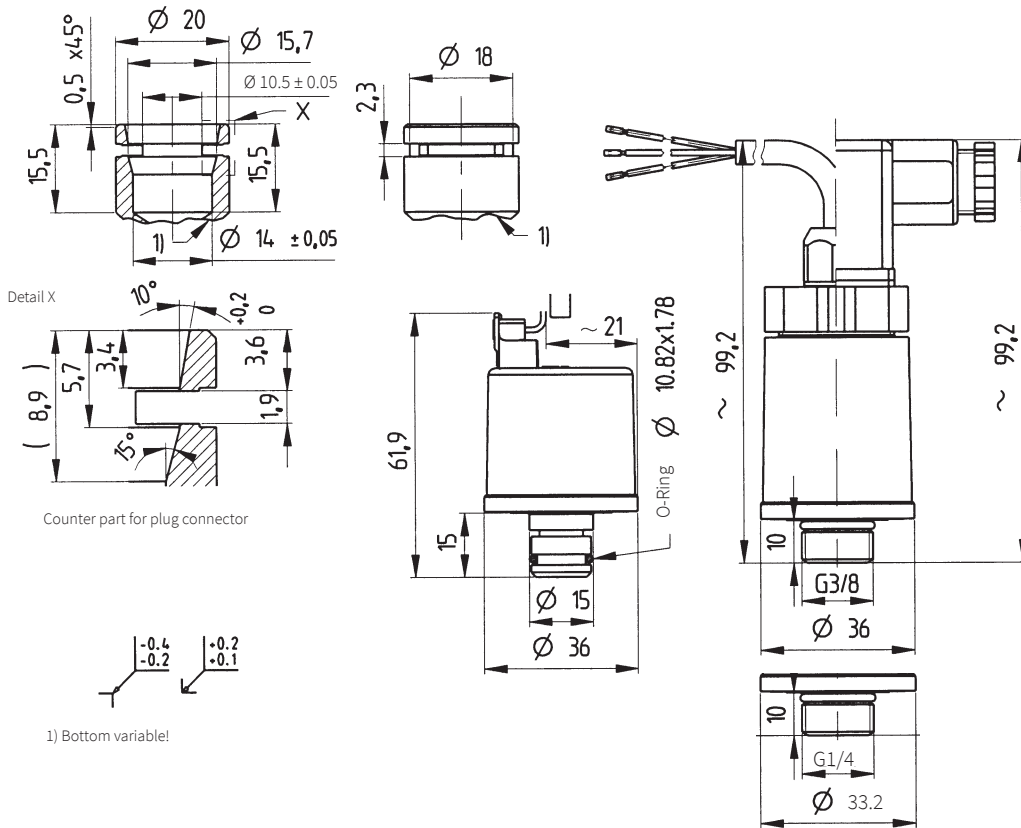
IN = red  
OUT = yellow  
GND = black

<sup>1)</sup> Other pressure ranges on request

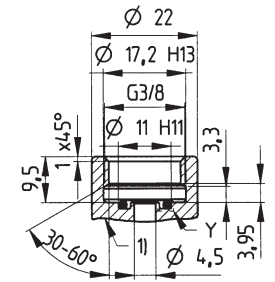
<sup>2)</sup> According to ISO standard R 1629, other sealing materials on request

<sup>3)</sup> Delivery without female connector

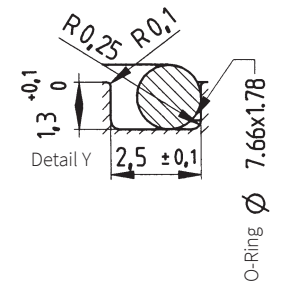
<sup>4)</sup> To be ordered separately from original manufacturer. Further information can be found in the manufacturer specification No. 114-18049



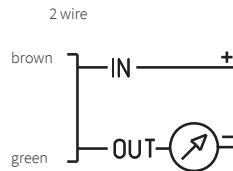
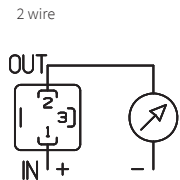
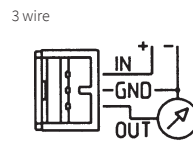
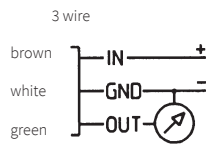
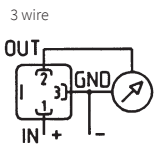
Counter part G 3/8 sealed at back



Counter part G 3/8 sealed at front



O-Ring Ø 7.66x1.78



**Huba Control AG**

Headquarters Schweiz  
Industriestrasse 17  
CH-5436 Würenlos  
Telefon +41 56 436 82 00  
Fax +41 56 436 82 82  
info.ch@hubacontrol.com

**Huba Control AG**

Niederlassung Deutschland  
Schlattgrabenstrasse 24  
D-72141 Walddorfhäslach  
Telefon +49 7127 2393 00  
Fax +49 7127 2393 20  
info.de@hubacontrol.com

**Huba Control AG**

Vestiging Nederland  
Hamseweg 20A  
NL-3828 AD-Hoogland  
Telefoon +31 33 433 03 66  
Telefax +31 33 433 03 77  
info.nl@hubacontrol.com

**Huba Control SA**

Succursale France  
Rue Lavoisier  
Technopôle Forbach-Sud  
F-57602 Forbach Cedex  
Téléphone +33 3 87 84 73 00  
Télécopieur +33 3 87 84 73 01  
info.fr@hubacontrol.com

**Huba Control AG**

Branch Office United Kingdom  
Unit 13 Berkshire House, County Park  
Business Centre, Shrivenham Road  
Swindon Wiltshire SN1 2NR  
Phone +44 1993 77 66 67  
Fax +44 1993 77 66 71  
info.uk@hubacontrol.com

**[www.hubacontrol.com](http://www.hubacontrol.com)**

