

# TYPE 602

## Pressure switch with changeover switch

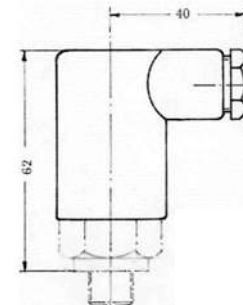
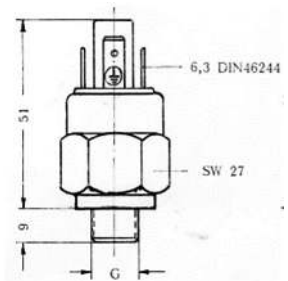
Width across flats 27  
 Height without connector 52mm  
 Thread length 9mm



A Kant pressure switch Type 602 has an integrated electric change over switch. When pressure is applied, a diaphragm is deformed or a piston is displaced via a lifting movement. The deformation or movement depends on an adjustable spring preload. When the switching point is reached, the diaphragm or piston has undergone a defined movement which actuates the switch and opens or closes the electrical circuit. Specific pressure values can be monitored via the switching signal.

	ADJUSTMENT RANGE [bar]	OVERPRESSURE SAFETY	ORDER NUMBER
DIAPHRAGM	0,2 – 2	100 bar	602-2-ABC
	1 – 10		602-10-ABC
	2 – 20	300 bar	602-20-ABC
	5 – 50		602-50-ABC
	10 – 100		602-100-ABC
PISTON	10 – 100	600 bar	602-100-ABC
	20 – 200		602-200-ABC

REPRODUCIBILITY	~ 2-5%	ELECTRICITY MAX.	6 Amp.
HYSTERESIS	~ 20% ; smaller upon request	TYPE OF PROTECTION	IP 65
SWITCHING ELEMENT	Change over contact	PERMISSIBLE TEMP.	-20° to +80° C
SWITCHING FREQUENCY	200/min	WEIGHT	0,12 kg
VOLTAGE	250 Volt		



- Flat connector 6,3 DIN 46244
- Optionally with device connector 600/601:  
 PG9 with strain relief  
 Plug connection 6X60° pivotable

### A Thread

	A
<b>G 1/8</b>	1
<b>G 1/4</b>	2
<b>M 10X1 CYLINDRICAL</b>	3
<b>NPT 1/8</b>	4
<b>R 1/8 TAPERED</b>	5
<b>M 10X1 TAPERED</b>	6
<b>M 12</b>	7
<b>M 12X1,5</b>	8
<b>NPT 1/4</b>	9

### B Sealing element

	B	APPLICATION
DIAPHRAGM	<b>NBR</b>	1 Hydraulic oil, Machine oil, Heating oil, sea water
	<b>FKM (VITON)</b>	2 Hydraulic fluids, Petrol, Alcohol, Salt and Sulphuric acid
	<b>EPDM (APTK)</b>	3 Hydrogen, Brake fluid, Acetylene, etc.
PISTON	<b>SILICONE</b>	4 Food, Water etc.
	<b>PISTON SEALING</b>	8 Oil
	<b>PISTON SEALING</b>	9 Hot water

### C Body material

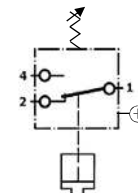
	C
<b>STEEL GAL ZN 5</b>	1
<b>VA 1.4305</b>	2
<b>BRASS 60</b>	3
<b>VA 1.4571</b>	8

### D Customized version

	D
<b>MICROSWITCH WITH GOLD PLATED CONTACTS</b>	5
<b>WATERPROOF MICROSWITCH WITH GOLD PLATED CONTACTS</b>	6

The Open, Close or Change function refers to increasing pressure.

### CONNECTION:



➔ Order Number Example:

ABCD  
 602-XX-1260  
 Customized version  
 Material  
 Sealing element  
 Thread  
 Setting range  
 Type