

TYPE 909

Hydraulic-pneumatic converter

Dimensions 30x30x88



	ADJUSTMENT RANGE [mbar]	ORDER NUMBER
DIAPHRAGM	5 – 50	909-50-ABC
	50 – 100	909-100-ABC
PISTON	50 – 100	909-100-ABC
	100 – 200	909-200-ABC
	200 – 400	909-400-ABC

REPRODUCIBILITY	~ 5%
WEIGHT	0,48 kg
CONTROL LINE	4 Ø Plug connection

A Thread

	A
G 1/4	2

B Sealing element

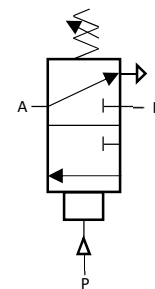
	B	APPLICATION
DIAPHRAGM	NBR	1 Hydraulic oil, Machine oil, Heating oil, Nitrogen, sea water
	FKM (VITON)	2 Hydraulic fluids, Petrol, Alcohol, Salt and Sulphuric acid
	EPDM (APTK)	3 Hydrogen, Brake fluid, Acetylene, etc.
	SILICONE	4 Food, Water etc.
PISTON	PISTON SEALING	8 Oil
	PISTON SEALING	9 Hot water

C Body material

	C
ALU	5
VA 1.4305	2

The Open, Close or Change function refers to increasing pressure.

A Kant pressure switch Type 909, also called pressure transducer, has an integrated pneumatic valve. When pressure is applied, a diaphragm is deformed or a piston is displaced via a lifting movement. The deformation or movement depends on an adjustable spring preload. When the switching point is reached, the diaphragm or piston has undergone a defined movement which actuates the pneumatic valve and releases the pneumatic pressure. A pneumatic function can be monitored via the pressure transducer.



→ Order Number Example:

